



Flight Plan & Site Survey

Created using **RPAS Wilco**[®]

Operation Name:	Mission 01-25-2023
Pilot Name:	[REDACTED]
Pilot Certificate:	[REDACTED]
Flight Start:	January 25, 2023 11:53 AM
Flight End:	January 25, 2023 1:53 PM
Flight Area (Latitude):	49° 19' 20.60" N (49.322)
Flight Area (Longitude):	123° 1' 30.50" W (-123.025)
Altitude - Radius:	Alt: 600 ft - Rad: 740.8 m (0.4 nm)
Airspace:	UNCONTROLLED
FIR - Contact:	CZVR - 604-586-4500
Weather:	5.2 Celsius - Rain, Partially cloudy

Please ensure you received all required authorizations prior to flight.

Disclaimer

This Site Survey was created using RPAS Wilco by AIM Robotics. The flight plan contained is intended only for RPAS flights on the date/time and location specified. The user accepts all responsibility for the accuracy and completeness of the information contained.

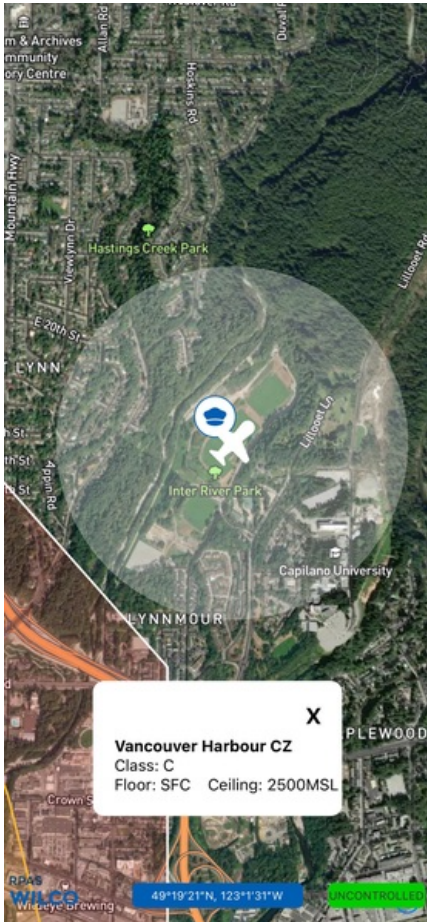
For the complete Terms & Conditions, see

<https://rpswilco.com/#/tnc>



Included

- Site Survey
- Obstacles (if available)
- Nearby Aerodromes
- Canadian Aviation Regulations
- GFA
- Aerodrome Supplements
 - METAR & TAF (if available)
 - NOTAMS
 - CFS

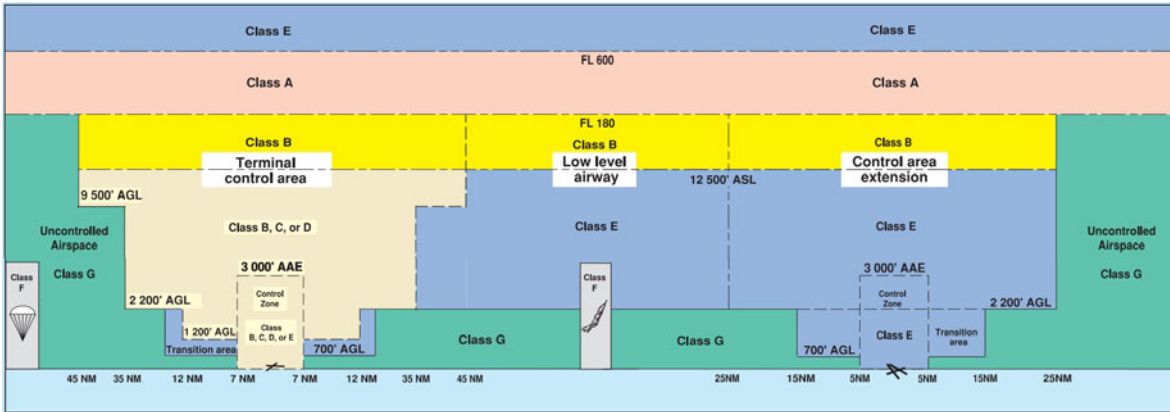
Flight Map



MAP Details

	Latitude	Longitude
 MODEL	49° 19' 20.60" N (49.322)	123° 1' 30.50" W (-123.025)
 Pilot	49° 19' 24.20" N (49.3234)	123° 1' 34.10" W (-123.0261)

Airspace Classification



Overlying Airspaces

Class	Name	Floor	Ceiling
C	Vancouver, BC TCA	6500MSL	8500MSL
C	Vancouver, BC TCA	8500MSL	9500MSL
C	Vancouver, BC TCA	9500MSL	12500MSL
B	Vancouver, BC TCA	12500MSL	18000MSL
E	T618 Airway	2200AGL	12500MSL
B	T618 Airway	12500MSL	18000MSL
E	V347 Airway	2200AGL	12500MSL
B	V347 Airway	12500MSL	18000MSL
E	T611 Airway	2200AGL	12500MSL
B	T611 Airway	12500MSL	18000MSL
E	T775 Airway	2200AGL	12500MSL
B	T775 Airway	12500MSL	18000MSL

Nearest Aerodromes & Distance from Operation

VANCOUVER HARBOUR (CYHC WATERDROME Reg)	Lat: 49.294	Long: 123.111	6.979 KM	3.77 NM
HARBOUR (PUBLIC) (CBC7 HELIPOINT Cert)	Lat: 49.287	Long: 123.106	7.061 KM	3.81 NM
DELTA HERITAGE AIR PARK (CAK3 AERODROME Reg)	Lat: 49.079	Long: 122.938	27.794 KM	15.01 NM

Weather Information for Mission Day

Summary: Partly cloudy throughout the day with early morning rain.

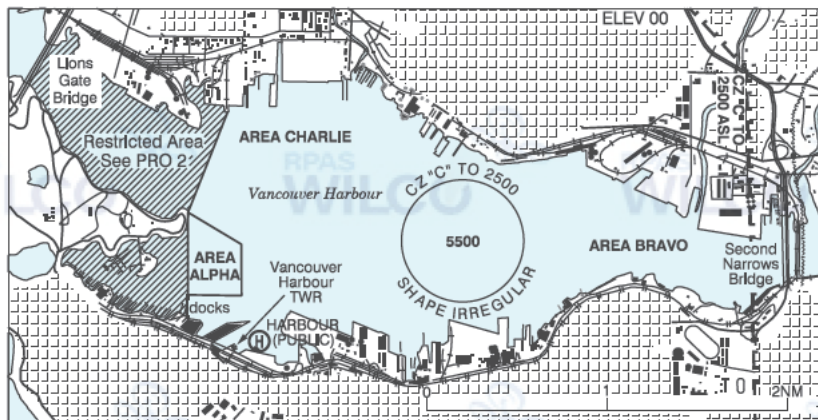
Condition	Temperature	Feels Like	Precipitation	Visibility	Cloud Coverage	Wind Speed	Humidity
Rain, Partially cloudy	5.2 Celsius	4.9 Celsius	100.0 %	7.2 Km	71.7 %	7.2 kph	96.1 %

BRITISH COLUMBIA

AERODROME / FACILITY DIRECTORY

VANCOUVER HARBOUR BC (water aerodrome)

CYHC



REF	N49 17 40 W123 06 41 Adj N 17°E (2013) UTC-8(7) Elev 00' VTA A5004 LO1 T1
OPR	Harbour Air 1-800-665-0212 Reg PN Vancouver Harbour Flight Centre (VHFC) 604-647-7570 or 604-328-4340 PN
PF	B-1,2 C-3,4,5,6
CUST	AOE/15 888-226-7277
FLT PLN	<p>FIC Kamloops 866-WXBRIEF (Toll free within Canada) or 866-541-4101 (Toll free within Canada & USA)</p> <p>ACC 604-775-9601/9606/9674</p> <p>WX LAWO 15-02Z± or til 1/2 hr after SS, whichever is later.</p>
SERVICES	<p>FUEL 100, JB, (100LL, JA, JA-1 avbl thru VHFC) PN</p> <p>OIL 100</p> <p>S 5</p>
COMM	<p>RCO Pacific rdo 123.15 (FISE)</p> <p>ATIS Vancouver Harbour 126.8 1-877-517-2847 dur twr hrs of ops.</p> <p>CLNC DEL Vancouver Harbour 125.35 all dep acft ctc clnc del only if instructed to do so on ATIS</p> <p>TWR Vancouver Harbour 118.4 (V) 15-02Z± or til half hour after SS, whichever is later. (emerg only 604-688-9254)</p> <p>ATF tfc 118.4 when twr clsd within Vancouver Harbour CZ shape irregular 2500 ASL</p> <p>TML 125.2</p>

BRITISH COLUMBIA

AERODROME / FACILITY DIRECTORY

VANCOUVER HARBOUR BC (water aerodrome) (Cont'd)

CYHC

NAV

NDB VR 266 (MZ) N49 10 22 W123 03 26
VOR/DME YVR 115.9 Ch 106 N49 04 38 W123 08 57 (37')

PRO

Refer to Vancouver Harbour VTPC

1. Arr/dep after 0700 hrs lcl. Noise Sensitive Areas surround harbour.
2. Acft ops normally limited to area Alpha. SW corner of area Alpha marked by large orange ball. No acft shall land, tkof or step taxi within rstd areas including First Narrows (Lions Gate) and False Creek.
3. Pilots are requested, while observing safe operating procedures, to maintain arr/dep profiles that avoid low flight and high power settings over Stanley Park.
4. See Vancouver VTA for VFR low level routes.

ATS REQUIREMENTS:

All VFR acft arriving, departing or transiting the Vancouver or Victoria Tower Class C or D airspace require a transponder code.

- All acft departing Vancouver or Victoria Intl (including Water Aerodrome) call Kamloops FIC at 866-541-4101 for code assignment at least 30 min prior to flight or file a VFR Flight Plan/Flight Itinerary.

- All acft arriving Vancouver, Victoria Intl (including Water Aerodrome) or transiting Vancouver or Victoria Control Zones obtain a code from one of the following ATS units: Vancouver Harbour, Nanaimo, Victoria Harbour, Boundary Bay, Langley, Abbotsford or Pitt Meadows or call Kamloops FIC at 866-541-4101.

-All acft arriving Victoria Intl from a non NAV CANADA site call Kamloops FIC at 866-541-4101 for code assignment at least 30 minutes prior to flight or file a VFR Flight Plan/ Flight Itinerary.

VANCOUVER / HARBOUR (PUBLIC) BC (Heli)

CBC7



REF N49 17 13 W123 06 22 Adj N
17°E (2014) UTC-8(7) Elev 2' VTA
A5004 CAP RCAP

OPR Pacific Heliport Services
604-688-4646 Fax 604-682-1478 Cert
Ldg fees PN

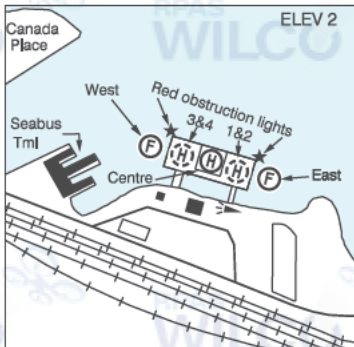
PF B-1 C-1,2,3,4,5,6

FLT PLN

FIC Kamloops 866-WXBRIEF (Toll free within Canada) or 866-541-4101 (Toll free within Canada & USA)

ACC IFR 604-586-4590/4591 or 800-668-1333; IFR tng flts PPR ctc 604-586-4592 or 800-668-1333.

WX LAWO 15-02Z± or til 1/2 hr after SS, whichever is later.



SERVICES 1430-0330Z± Mon-Fri, 15-03Z± Sat-Sun & hol(s) exc clsd Dec 25 & Jan 1

FUEL JA-1 (FSII avbl)

S 1,5,6

HELI DATA

FATO/TLOF CENTRE 90' x 90' CONC Safety Area 120' x 120' 20,000 lbs

FATO WEST 149' x 149' non-supporting Safety Area 198' x 198'

FATO EAST 149' x 149' non-supporting Safety Area 198' x 198'

PAD-1 52' dia CONC 50,000 lbs

PAD-2 52' dia CONC 50,000 lbs

PAD-3 52' dia CONC 20,000 lbs

PAD-4 44' dia CONC 20,000 lbs

Heli in excess of 60' overall length PPR. (CAR 602.96)

APRON Prkg fees; ctc opr

RCR Opr

LIGHTING RW(LO) green LED ARCAL-118.4 type J, RR around deck.

BRITISH COLUMBIA

AERODROME / FACILITY DIRECTORY

VANCOUVER / HARBOUR (PUBLIC) BC (Heli) (Cont'd)

CBC7

COMM

ATIS	Vancouver Harbour 126.8 1-877-517-2847 dur twr hrs of ops
CLNC DEL	Vancouver Harbour 125.35 all dep acft ctc clnc del only if instructed to do so on ATIS
TWR	Vancouver Harbour 118.4 (V) 15-02Z± or til 1/2 hr after SS, whichever is later. (emerg only 604-688-9254)
ATF	tfc 118.4 when TWR clsd within Vancouver Harbour CZ shape irregular 2500 ASL.
ARR	128.6
DEP	126.125
UNICOM	122.35 1430-0330Z± Mon-Fri, 15-03Z± Sat-Sun

PRO

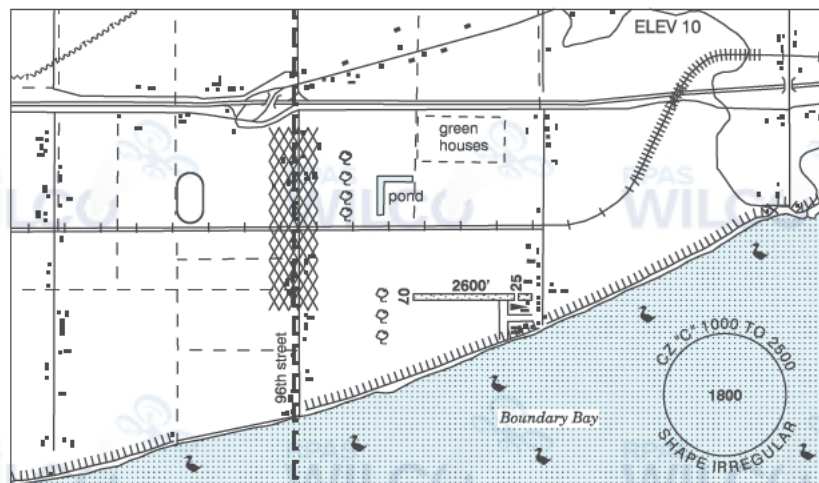
5 min prior to ldg ctc Opr on 122.35 for prkg instructions and advise number of persons on board. Dep climb over water BPOC.
 DAY: Wind & tfc permitting arr/dep via FATO (marked triangle) arr/dep 351° to 017° fr heli, slope 8% (H3). O/T via unmarked hover areas over water immediately E & W of helipad.
 NIGHT: Arr/dep via FATO (marked triangle) arr/dep 351° to 017° fr heli, slope 8% (H3). No stopping on FATO. (See heli-sketch on previous page.)
 Procedures for crossing the southern Strait of Georgia within Tml Class C airspace refer to Vancouver Intl, VTPC for Crossing the Southern Strait of Georgia. See Vancouver VTA for VFR low level routes.

CAUTION

Remain clear of seabus tfc.

DELTA / DELTA HERITAGE AIR PARK BC

CAK3



REF	N49 04 43 W122 56 17 4.5E 17°E (2013) UTC-8(7) Elev 10' VTA A5004
OPR	Recreational Aircraft Association, Chap 85 (DapCom) 604-543-8894, Caretaker 604-722-3791 Reg PPR by phone 604-878-9050
PF	B-1 C-2,3,6 D-4,5
FLT PLN	
FIC	Kamloops 866-WXBRIEF (Toll free within Canada) or 866-541-4101 (Toll free within Canada & USA)
SERVICES	
FUEL	100LL
S	4,5
RWY DATA	Rwy 07/25 2600x75 TURF Thld 25 displ 300'
RCR	Opr No win maint. Rwy soft when wet
COMM	
ATIS	Boundary Bay 125.5 15-07Z±
ATF	tfc 123.3 2NM below 1000 ASL Excluding that portion which penetrates Boundary Bay class "C" airspace.

BRITISH COLUMBIA

AERODROME / FACILITY DIRECTORY

DELTA / DELTA HERITAGE AIR PARK BC (Cont'd)

CAK3

PRO

HELI
NOISE

Heli tng not auth.

Circuit alt 600 ASL. Rgt hand circuits Rwy 25 (CAR 602.96).

NOISE ABATEMENT PROCEDURES:

Departures:

Rwy 25 Dep: When safe hdg 280°, then further right turn to crosswind to avoid noise sensitive area.

Downwind dep auth fr Rwy 25 at 600 ASL. No southbound dep until clear of circuit to E. Avoid flt over dike and adj water area below 600 ASL.

Arrivals:

All arr to air park fr seaside. Cross midfield at 600 ASL and join downwind (CAR 602.96).

Rwy 07 Arr: Fr downwind, turn on base leg well bfr 96th Street to avoid noise-sensitive area. When S of railway tracks hdg 100° to intercept final apch E of row of trees.

Boundary Bay A/D 2.5NM W, obtain clnc prior to entering Boundary Bay CZ. Refer to VTPC. Procedures for crossing the Southern Strait of Georgia within Tml Class C airspace refer to Vancouver Intl VTPC FOR CROSSING THE SOUTHERN STRAIT OF GEORGIA ABOVE 2500FT.

CAUTION

Extremely confined circuit. Trees 750' fr thld Rwy 07, trees and obst adj to thld Rwy 25. Acft unable to accommodate noise abatement procedures and obst avoidance should avoid the air park. Beware of Boundary Bay A/D tfc close to Delta Heritage Air Park.